

## Tossed Nine Patch Variation

(Two Color Quilt)

	<b>Baby (3x4)</b>	<b>Lap (4x6)</b>	<b>Queen (6x8)</b>
	49"x61"	61" x 86"	86" x 110"
Background	¾ Yard	2 ¾ Yards	3 ½ Yards
Center Square	¼ Yard	¾ Yard	1 Yard
Color Square	¾ Yard	2 ¾ Yards	3 ½ Yards
Inner Border	¼ Yard	½ Yard	¾ Yard
Outer Border	¾ Yard	1 ¼ Yard	2 ¾ Yards
Binding	½ Yard	¾ Yard	1 Yard

Quilt cutting requirements are shown in parentheses: (Baby, Lap, Queen)

### **Cutting:**

Background: Cut (6,16,24) 5" x wof Strips  
 Cut again into (5"x5") Squares  
 You will need (48,128,192) squares.

Colored Fabric: Cut (6,16,24) 5" x wof Strips  
 Cut again into (5"x5") Squares  
 You will need (48,128,192) squares

Accent Fabric: Cut (2,4,6) 5" x wof Strips  
 Cut again into (5"x5") squares  
 You will need (12,32,48) squares

Accent Border: Cut (4,7,10) 1 ½" x wof Strips

Outer Border: Cut (4,7,10) 5" x wof Strips

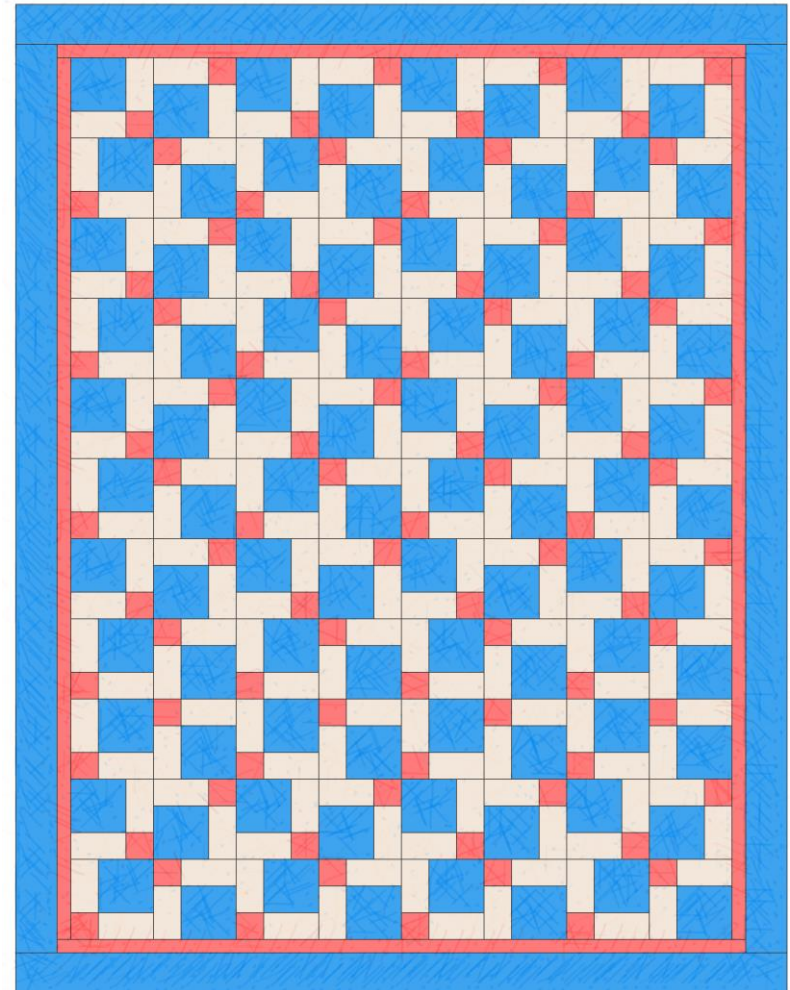
Little Red Hen Pattern  
 Ashland, KY

\$4.00  
 606-329-2400

## Tossed Nine Patch Variation

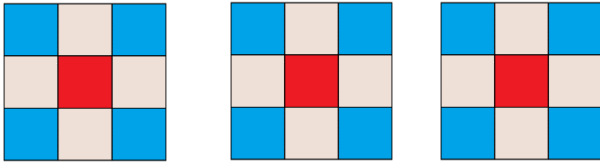
(Two Color Quilt)

Select Two Co-ordinating prints to make this fun and easy quilt.  
 This is a variation of **Quilt In a Day's Tossed Nine Patch Pattern**

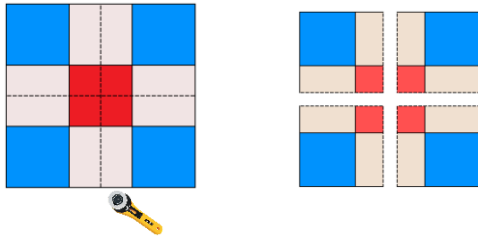


**Sewing:**

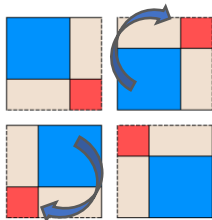
1. Make Nine Patches as shown. Make (12,32,48).



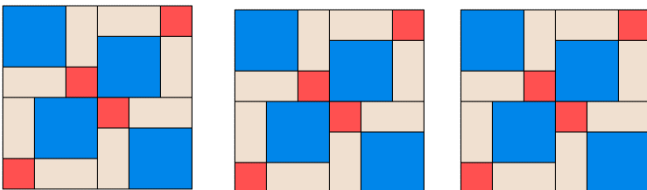
2. Press.
3. Cut apart at the center as shown. We measure the center square for this step.



4. "Toss" two of the cut blocks to make a new block.



5. Sew Blocks together. Make (12,32,48).



6. Sew together in rows according to your quilt size.
  - a. Baby (3 x 4), Lap (4 x 6), Queen (6 x 8)
7. Sew Borders onto long sides first and then the top and bottom. Complete the inner border before beginning the Outer Border.

*\*Lap Size shown in diagram below.*

